

PLAYBILL®

Town and Country Players
Doylestown, PA

TOWN AND COUNTRY PLAYERS

The Nutcracker

DECEMBER 2-10
A TIMELESS CHRISTMAS CLASSIC
Produced by NANCY RIDGEWAY
Choreographed by REINA FAITH



75



RESERVE TICKETS

Tickets \$25 Child \$15
townandcountryplayers.org
OR call 800-838-3006

LOCATION

Town and Country Players
4158 York Road
Buckingham, PA 18912

SHOWTIMES

December 2, 3, 9, 10
at 8pm
December 3, 4, 10
at 2pm

TOWN AND COUNTRY PLAYERS is a 501 (C) (3) Not-For-Profit Organization

Town and Country Players

PROUDLY PRESENTS

THE NUTCRACKER

By

Pyotr Ilyich Tchaikovsky

with

Vienna Ludt
Lila Peters
Ayosi Doherty
Kailey Kim
Molly Kessler
Andrew Worthington
Emmy Muldoon
Victoria Vasilyeu
Lilly Benner
Julia Kingsbury
Jillian McGinnis
Layla Shokry Burns
Will Galt
Jon Knapp
Monica Carr-Spadafora
Dominique Galloway

Ryan Polchan
Taylor Granoff
Julia Peters
Maddie Schuster
Sophia Metzler
Kaitlyn Hilton
Ivy Rizzello
Aria Izgur
Eva Peters
Emily Vasilyeu
Paige Abbott
Sharon Granoff
Will Blakie
Tim Blakie
Nicole D'Angelo Ludt
Andrea Cervantes

Grace Kiernan
Hanna Taffel
Amanda Mansley
Clara Shafer
Emma Bonargo
Mya Abbot
Oliva Magalio
Ruby Faulkner
Sarah King
Lilly Owens
Milla Humes
Saffron Faith
Emma Robertie
Dan Weidman
Amy Fiscus
Joseph Spadafora Jr.

Lighting Design
David Cassel

Set Design
David Sharper

Scenic Design
Barbara Emch

Choreographed by
Reina Faith

Directed by
Nancy Ridgeway

The Story of The Nutcracker

The Nutcracker Ballet is based on the story *The Nutcracker and the Mouse King* written by E.T.A. Hoffman which tells the tale of a young German girl who dreams of a Nutcracker Prince and his fierce battle against a Mouse King.

The ballet takes place on Christmas Eve at a large and grand house owned by the family Silberhaus. Their Christmas tree is the most beautiful tree imaginable and the family is hosting their annual Christmas party and welcoming the arrival of their family and friends. The Silberhaus children, Clara and Fritz, are dancing and playing with their friends as the party grows festive with music and dance.

Clara's godfather, Drosselmeyer arrives. He is a skilled clock and toy maker and is also full of magical surprises. Drosselmeyer draws everyone's attention when he presents two life-size dolls who each take a turn to dance. Drosselmeyer gives a special present each to Clara and Fritz and the children begin to open their gifts. Although Fritz's gift is quite nice, Clara receives a beautiful Nutcracker that becomes the hit of the party. Fritz becomes jealous and grabs the Nutcracker from Clara and breaks it. Clara is heartbroken but Drosselmeyer magically summons a handkerchief from the air and quickly fixes the toy.

As the clock strikes midnight, strange things begin to happen. Clara begins to shrink as the Christmas tree grows taller and taller into the air. The toys around the tree come to life and the room fills with an army of Mice, led by the fierce Mouse King. As the Nutcracker awakens, his army of Toy Soldiers battle with the Mice until they can go on no longer and are captured by the Mice and their King. Clara makes a final daring charge by throwing her slipper at the Mouse King, hitting him square on the head. The Mouse King drops to the floor and the Mice run away, carrying off their leader's body.

The Nutcracker turns into a real-live Prince and takes Clara on a journey to the enchanted wonderland forest, the Land of Snow, where they are welcomed by dancing Snowflakes.

The Prince escorts Clara to the Land of Sweets where they are greeted by the Sugar Plum Fairy. The Prince tells the Sugar Plum Fairy about the daring battle with the army of Mice and she rewards them with a celebration of dances: Spanish, Arabian, Russian, Chinese, Marzipan, Polichinelles and the Waltz of Flowers. As a finale, the Sugar Plum Fairy, Clara and the Nutcracker all dance together to the beautiful music of the Pas de Deux.

As the ballet begins to end, Clara awakens from her dream to find herself by the Christmas tree with her beloved Nutcracker.

A Note from the Director

Prior to being a member of Town and County Players, I was very involved with a local student ballet company where my daughters, Taylor and Page, were dancers. During that time, I produced and stage managed *The Nutcracker* while my girls were in high school. It was always a family affair too, with my husband Joe working the growing Christmas tree and making it snow. In addition, a number of T&C members participated in the Party Scene, including Dan Weidman, Jillian Swann and Joe Spadafora Jr. It was a very special time for all of us and ever since, I have always believed that *The Nutcracker* would be a wonderful venture for T&C.

Several years ago, my good friend Dan Weidman, approached me and asked if I had ever thought about doing a production of *The Nutcracker* at the T&C. A very big smile appeared on my face and that was how the 2014 production came to be.

Once again, I have had the pleasure of working in partnership with Reina Faith of Dance Arts Collaborative in creating this production. Reina is an amazing choreographer and visual artist. She has brought her entire studio of young dancers to our theater and they have worked tirelessly to bring the story of Clara's dream to realization. I am extremely impressed with this young group of dancers and I know audiences will be as well.

A full length ballet is complicated and *The Nutcracker* is no exception. All the necessary bells and whistles to create the magic are difficult and I am grateful to my production crew for their energy, creativity and willingness to go the extra mile to make the magic.

Finally, I am delighted that T&C members and long time supporters, Dan Weidman, Amy Fiscus, Monica Carr Spadafora, Joseph Spadafora, Jr. and Tim Blakie are appearing in the Party Scene. This will be the fourth time that T&C has produced a full length ballet and collaborated with an outside organization. Due to COVID, 2020 was skipped, but we are back at it for 2022. I am very proud of this production and I hope you enjoy the show.

Nancy Ridgeway

Director

A Note from T&C's President

Welcome to the Town and Country Players' 2022 Season. This represents a milestone year in our history, as this is our 75th season of bringing quality community theater to the Bucks County Area.

Town and Country Players got its start in 1948, with a production of *The Late George Apley*, performed at the Doylestown Borough School. T&C moved to our current location, "The Barn," in 1953, renting the barn until we purchased it in 1962. Throughout the years, we have made many improvements to our space, including air conditioning, catwalks, raked seating, sound and lighting improvements, and - perhaps most importantly - our addition in 2014 which tripled the number of restrooms and added rehearsal space.

That said, T&C is more than just the name and the barn that we perform in. If one looks at our database of past productions, one will find a list of nearly 4000 individuals who have been involved in our productions over the years, from actors, musicians, directors, and producers, to designers, technicians, carpenters, stage crew, and stage managers. This doesn't include those members who have supported us in other areas, including the myriad of business/operational areas required to continuously bring productions to the stage.

Of course, all the effort required to bring a production to the stage wouldn't count for much without the support of our community. From the 400 patrons who came to see *The Late George Apley* in 1948 to the 150 who can fill the house for each performance our intimate theater today, without our patrons, all those hours and late nights spent rehearsing, designing, building would be for naught.

I also want to thank all those who have donated to T&C over the years. Your generosity has enabled us to keep the lights on, improve our infrastructure, and weather hard times (like the last couple of years).

When we started to plan our 75th season, we decided to focus on large cast, generally happy/uplifting shows after two seasons impacted by COVID. We also wanted to celebrate our 75th season by selecting shows with either a tie to either T&C or to the Bucks County area. We are closing our milestone year with two familiar events. *The Nutcracker* has become a tradition at T&C since being first presented in 2014. Whether you have seen our previous productions or not, I hope you enjoy today's performance.

Matthew Schultheis

President, Town and Country Players

Biographies

***Nancy Ridgeway* - Director**

Nancy is a seasoned director and producer of plays and musicals in and around Bucks County and Philadelphia, Pennsylvania. Drawn to intimate, intriguing writing, in addition to being the primary director of the radio plays for R5 Productions, Nancy's other credits include productions at Old Academy Players; *Vernal Rites* (director) *Buried Child* (director), *Honky Tonk Queen* (director), *Lips Together*, *Teeth Apart* (producer), and *A Song I Forgot to Sing* (costume designer). Her directorial work at Town and Country Players includes *Next to Normal*, *Other Desert Cities*, *A Few Good Men*, *August: Osage County*, *Good People*, *The Music Man*, *Sweeney Todd*, *Bye Bye Birdie*, and *Carousel*.

***Reina Faith* - Choreographer**

Reina received her early dance training from Irene Fokine where she was a jazz scholarship recipient and a member of Ms. Fokine's company. Her background was furthered with concentrated study in Boston at Emerson College, where she was a member of the contemporary dance company Off-Balance and Moving West. She then moved to New York City where she was a graduate from the American Academy of Dramatic Arts.

She is an Equity performer whose many credits include the Off-Broadway production and national tour of *The Secret Garden*, as well as regional, dance and television work. She has been on faculty at Interlochen Center for the Arts, Summer 2000, where she also choreographed the main stage production of *Kiss Me Kate*. Her contemporary piece "*A Cello Romp*" (created for the International Ballet Competition in Jackson, MS) was performed at the Palm Desert Choreography Festival Under the Stars.

Reina was the choreographer and director of the full-length dance theatre piece called *Fortune Cookie Fortunes* based on the book by author Grace Lin for the non-profit organization Families with Children from China. She was also proud to have her piece "*Kindertransport*" based on the Kindertransport of World War II commissioned by the Kindertransport Survivor Society and shown at their annual conference in New Jersey; it was a recipient of a Pennsylvania Humanities Grant through the Children's Cultural Center.

Reina has been the Associate Director of Dance at Moravian College in Bethlehem, PA where she was one of the choreographers involved in *Collaboration*, the premiere of a new Jazz Ballet produced by Moravian College at Foy Hall. She was a finalist in the Leo's Jazz Dance Choreography Event at the Jazz Dance World Congress in Chicago Summer 2009. This summer Miss Reina completed the Teacher Training Program at Central Pennsylvania Youth Ballet in Carlisle PA under the direction of Marcia Dale Weary and Darla Hoover.

Biographies (continued)

Faith Sherman - Choreographer (Angels)

Faith is an Equity performer who was in the original cast of *Nunsense* at the Society Hill Playhouse in Philadelphia. She is a founding member of Storybook Musical Theatre and conducts their *Page to Stage* workshops for young children. Faith has been the choreographer for Germantown Academy for over ten years. She has studied and danced with the Pennsylvania Ballet and has taught ballet, theatre dance and tap for various schools in the Philadelphia area.

Tyger-B - Choreographer (Russian Dance)

International multi-artist, Tyger-B, is known for his achievements around the world, dedicated mentality, career path, and knowledge of his fields of expertise. Making history as one of the first people to represent USA in France for the style of HipHop at Juste Debout, is just one of his achievements. He is also a graduate of the dance department at the University of the Arts in Philadelphia, has starred in several music videos and short films as a principle actor/dancer/choreographer, including the most recent recording artist Madison Ryan Ward's "Mirror". He has set work on major dance companies around the world, like Pennsylvania Ballet II.

Despite having a company that supports other hard working homogeneous artists in multiple fields like visual arts, stand-up comedy, and modeling, Tyger-B hasn't slowed down a beat, as he continues to tour the world teaching, competing, and spreading the hard work mentality in the dance styles of Dancehall, HipHop, House Dance, and many more.

Finishing up his third solo tour doing all those things in China earlier this year, not to mention touring back and forth to Canada and Russia since 2012, Tyger-B has continually been moving back towards the music industry after taking a break from choreographing and dancing for recording artists like Ginuwine and Raven Symone; all the while pushing his acting career more and more each day.

From taking his abilities around the world to places like South Africa, Paris, Tokyo, Uzbekistan, to teaching workshops in locations like Vancouver, Moscow, Ukraine; Tyger-B has always held tight to his lessons from prior loved ones, teachers, and supporters, assuring his purpose is to do a huge deal for others, like they have done for him. His wide range of vocabulary, random facts, and passionate heart will have you wrapped up in his life just as much as he is focused.

Tyger-B is also a mixed martial artist, clothing designer, graphic designer, videographer and cinematographer and the author of "The Nov. 5th Baby" book of poetry.

SCENES

Act I

OVERTURE

TABLEAU I	The Silberhaus Residence
Scene 1	The Christmas Tree
Scene 2	March
Scene 3	Children's Gallop and Dance of the Parents
Scene 4	Magic Begins
Scene 5	Waltz
Scene 6	Clara and the Nutcracker
Scene 7	The Battle
TABLEAU II	A Pine Forest in Winter
Scene 8	The Land of Snow
Scene 9	Waltz of the Snowflakes

Act 2

TABLEAU III	Magic Castle in the Land of Sweets
Scene 10	The Land of Sweets
Scene 11	Clara and the Nutcracker Prince
Scene 12	Divertissement
Scene 12(a)	Spanish Dance
Scene 12(b)	Arabian Dance
Scene 12(c)	Chinese Tea Dance
Scene 12(d)	Russian Dance
Scene 12(e)	Marzipan
Scene 12(f)	Polichinelles
Scene 13	Waltz of the Flowers
Scene 14	Pas de Deux
Scene 15	Final Waltz and Apotheosis

CAST

Cast Members

Nutcracker Prince	Ryan Polchan
Clara	Vienna Ludt
Fritz	Grace Kiernan
Mother of Clara and Fritz	Sharon Granoff
Father of Clara and Fritz	Jon Knapp
Grandfather Dr. Silberhaus	Dan Weidman
Grandmother Silberhaus	Amy Fiscus
Drosselmeyer	Tim Blakie
Nicholas, Drosselmeyer's Nephew	Will Blakie
Peter, Drosselmeyer's Nephew	Ryan Polchan
The Maid	Andrea Cervantes
Party Guests	Nicole D'Angelo-Ludt, Dominique Galloway, Joseph Spadafora, Jr., Monica Carr-Spadafora
Party Scene	Lila Peters
Party Scene	Hanna Taffel
Party Scene	Taylor Granoff
Party Scene	Ayosi Doherty
Party Scene	Amanda Mansley
Party Scene	Hailey Kim
Kissing Dolls	Molly Kessler
Kissing Dolls	Clara Shafer
Soldier Dolls	Julia Peters
Soldier Dolls	Andrew Worthington
Mouse Queen	Olivia Magalio
Mice	Lila Peters
Mice	Hanna Taffel
Mice	Emma Bonargo
Mice	Emmy Muldoon
Mice	Sophia Metzler
Mice	Amanda Mansley

CAST

Cast Members (continued)

Mice	Maya Abbot
Mice	Victoria Vasilyeu
Baby Mice	Verona Ludt
Baby Mice	Maddie Schuster
Nutcracker:	Ryan Polchan
Soldier	Taylor Granoff
Soldier	Grace Kiernan
Soldier	Ayosi Doherty
Soldier	Lily Benner
Soldier	Ivy Rizzello
Soldier	Jillian McGinnis
Soldier	Layla Shokry Burns
Soldier	Aria Izgur
Snow Queen	Julia Peters
Snow King	Will Galt
Snow Corps	Molly Kessler
Snow Corps (Dance Captain)	Olivia Magalio
Snow Corps	Clara Shafer
Snow Corps	Kailyn Hilton
Snow Corps	Julia Kingsbury
Snow Corps	Ruby Faulkner
Snow Corps (Understudy)	Taylor Granoff
Angels	Verona Ludt
Angels	Paige Abbott
Angels	Maddie Schuster
Angels	Milla Humes
Angels	Lilly Owens
Angels	Ivy Rizzello
Angels	Jillian McGinnis

CAST

Cast Members (continued)

Angels	Layla Shokry Burns
Angels	Aria Izgur
Sugar Plum Fairy	Molly Kessler
Cavalier	Andrew Worthington
Spanish	Wilt Galt
Spanish	Olivia Magalio
Arabian	Sarah King
Chinese	Grace Kiernan, Ayosi Doherty, Hanna Taffel
Russian	Saffron Faith, Julia Kingsbury, Lila Peters, Taylor Granoff
Marzipan	Clara Shafer
Baby Sheep	Emily Vasilyeu
Polichinelles	Eva Peters, Hailey Kim, Ayosi Doherty, Emma Robertie, Amanda Mansley, Sophia Metzler, Maya Abbot, Emmy Muldoon
Waltz of the Flowers Soloist	Ruby Faulkner
Waltz Corps	Kailyn Hilton, Olivia Magalio, Clara Shafer, Julia Peters, Julia Kingsbury

PRODUCTION TEAM

Production Staff & Crew

Director	Nancy Ridgeway
Choreographer	Reina Faith
Angels Choreographer	Faith Sherman
Russian Choreographer	Tyger -B
Chinese Choreographer	Nicole Ludt
Lighting Designer	David Cassel
Lighting Designer	Matthew Schultheis
Lighting Assistants	Jim MacIntosh, Taylor Ridgeway, John Neuman, Victoria Schultheis
Light Board Operator	Valerie Sharper
Set Design	David Sharper
Scenic Design	Barbara Emch
Scenic Design Assistant	Susan Galli
Costume Design	Nancy Ridgeway, Reina Faith
Costume Assistants	Anita Wessier - Matador Costume Kim O'Byrne - Snow King Sally Fabian - Mice Lynne Anne Donchez - Mice and hand sewing for general alterations
Costume Organization	Danielle Benner, Stefanie Muldoon
Snow Shakers	Lynne Anne Donchez (Lead)Monica Carr Spadafora Andrea Cervantes
Stage Crew	Joseph Spadafora Jr Dan Weidman Amy Fiscus Jon Knapp Lynne Anne Donchez Monica Carr Spadafora Sharon Granoff Nicole D'Angelo Ludt Dominique Galloway
Program	Kim O'Byrne Jean Laustsen

CANDLEWYCK BAR & GRILL

RESTAURANT • TAVERN • TAKE-OUT

- **Show your ticket stub and receive 20% off your check!**

This discount is good for one use and only valid the week of the ticket date

- **Stop by our Bottle Shop! “Home of 1,000 Beers” with the area’s BEST prices!**



2551 Durham Road (Corner of Rt 202 & 413) • 215-794-8233



FIRST PARTNERS ABSTRACT COMPANY

Give us a call
or
Check out our website:
www.firstpartnersabstract.com

*Interested in purchasing a home or refinancing
and need to a full service title insurance
company to assist you?*

Want to know a property's recorded history?

Curious about what title insurance involves?

We specialize in making the process of purchasing title insurance as simple as possible. At First Partners Abstract Company we want to make you a partner in the process. We strive to work together to make the transaction run as smoothly as possible.

Servicing Pennsylvania and New Jersey for over 25 years.

Our Newest office is located at:
**169 North Broad Street
Doylestown PA 18901.
Phone #: 267-864-5020**

Our Corporate office is located at:
**605 Corporate Drive West
Langhorne, PA 19047
Phone #: 215-579-3223**



WILLIAM PENN
BANK

FEATURING

**BANKING THAT
MAKES YOU THE
STAR OF THE SHOW**



www.william penn.bank 800-845-3577

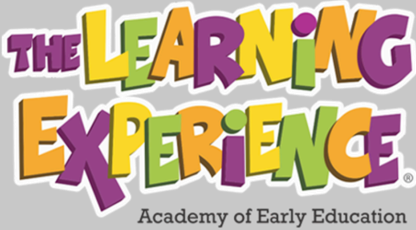


Community Banking at heart.

**Open 7-days a week...
Stop by and find out
what we're all about!**



45 E. STATE ST., DOYLESTOWN, PA 18901



happy
happens
here.

1721 S Easton Road
Doylestown PA 18901
Phone: 215-343-3007
Doylestown@tlechildcare.com
Doylestown.tlechildcare.com



Larry E Krevitz, DDS PC

**Family & Cosmetic Dentistry
122 N York Road- Suite 11
Hatboro Pa 19040
Drkrevitz.com 215 674 2505
info@drkrevitz.com**

Excellence By Choice





Paul Waldowski
215-275-6741
PWaldowski24@gmail.com



Meg Waldowski
215-275-6940
MWaldowski4@gmail.com

Over 85 Years of Professional Experience



**Proud Supporter of
the Arts and Community Theater
in Bucks County**



Shelly Law Offices, LLC

Concentrating in Plaintiff Personal Injury and Wrongful Death Law



ph 267-454-7940 • fax 267-454-7941 • www.shelly-law.com
70 W. Oakland Ave., Suite 208 • Doylestown, PA 18901
carol@shelly-law.com • kwhite@shelly-law.com •
sfrankenfield@shelly-law.com





"The farmer has to be an optimist or he wouldn't still be a farmer"
Will Rogers

None Such Farming Season Highlights
 April to Late May....Herb Plants
 May to Early June....Asparagus
 Early to Mid June....Strawberries
 Late July to sometime in September....Sweet Corn and Tomatoes
 October....Pumpkins and Winter Squash
 All year....None Such Raised Black Angus Beef

Seasonal Events on None Such Farm
 Late April, Early May Saturdays & Sundays TBD
 Greenhouse open for purchase of our homegrown plants
 Early to Mid June TBD
 Pick Your Own Strawberries
 October Saturdays & Sundays TBD
 Our Pumpkin Fields are open

None Such Market

100% Black Angus Beef raised on our Farm
 100% Non-GMO Feed - Freshly Cut Steaks & Roasts - Freshly Ground Beef - Available in our Meat Shop

NONE SUCH MARKET open WEDNESDAY THROUGH SATURDAY 10 am to 6 pm
 Closed Sunday through Tuesday

4458 York Rd. Buckingham, PA 18912

215-794-5201

nonesuchfarm.com



"North America's Premier Inspection Service"
 Independently Owned & Operated

CHRIS MARSHALL

Owner / Inspector
 Bonded & Insured

PA Radon Cert. #2713



NATIONAL PROPERTY INSPECTIONS®

Residential • Commercial • Warranty Inspections • Relocation

Bus. (215) 579-1996 • Cell (215) 416-9013 • Fax (215) 579-1445
 email: cmarshallnpi@verizon.net • www.npiweb.com/cmarshall



Congratulations from all of us at the UPS Store!



The UPS Store
Serving Warminster & Doylestown

- Packing & Shipping
- Professional Printing
- Faxing Services
- Small Business Services
- Mail & Postal Services
- Veteran/Armed Service Discounts
- Office & Mailing Services
- Notary Services

DOYLESTOWN: 132-A VETERANS LANE
215-230-9898 • store3797@theupsstore.com

WARMINSTER: 868 WEST STREET ROAD
215-672-5330 • store4907@theupsstore.com

NEW STORE IN WARRINGTON: LATE SPRING/EARLY SUMMER 2022

CREMATION SHOULD NOT BE OUTSOURCED



Most funeral homes use a third-party contract crematory. Varcoe-Thomas assures every step of care for your loved one is managed within our private facility. If you choose cremation, let our family care for your family.

Jason "Oz" Oszczakiewicz
Owner/Supervisor
Serving Families with Compassion,
Respect & Professionalism Since 1879

215-348-8930



State Of The Art Crematory Now On Site

344 North Main Street
Doylestown, PA 18901

www.varcoethomasfuneralhome.com



Oak Mortgage, a Division of Republic First Bank dba, Republic Bank, NMLSR#738460.

Joshua I Lerman (NMLSR#135143)
215-962-8586
jlerman@myrepublicbank.com

JUST CALL JOSH TO GET PREQUALIFIED

Eight Neshaminy Interplex, Suite 105, Trevoze, PA 19053

Robert O'Reilly
Financial Advisor

Doylestown Wealth Management

165 West Ashland St.
Doylestown, PA 18901

Concerned about retirement?

Call for a FREE consultation to discuss your financial goals. Find peace of mind with sound retirement planning advice.

267-815-5669

Robert.oreilly@lpl.com





Allstate®

You're in good hands.

**24-hour
Customer Service**

Mike McCusker

Agency Owner

McCusker Insurance Agency Inc

Allstate Insurance

Philadelphia, PA 19111

Phone 215-728-7800

Fax 215-728-7896

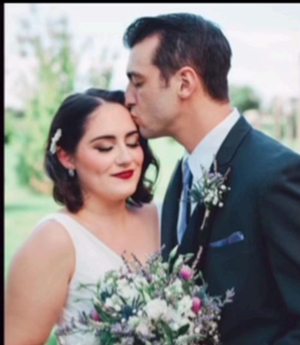
mikemccusker@allstate.com

10431 Academy Road, Suite "O"

Philadelphia, PA 19114

215-612-5558

DRESS YOUR BEST FOR
BRIDAL WITH DESIGNERS LIKE
MADI LANE, MORILEE,
STELLA YORK, MIA SOLANO,
AND MORE



ALL-INCLUSIVE TUXEDO AND
SUIT RENTALS FROM
DESIGNERS LIKE IKE BEHAR,
MICHAEL KORS, RALPH
LAUREN, AND MORE



Darianna 
Bridal & Tuxedo

241 Easton Road
Warrington, PA 18976

Call or Text: 215-491-8500
www.dariannabridal.com



THE STATION THAT STILL REMEMBERS

Radio Delawate Valley
www.wrdv.org

BIG BAND • SWING • ROCK & ROLL
DOO-WOP • RHYTHM & BLUES
plus other old time nostalgia

BROADCASTING
IN PHILADELPHIA

STREAMING
24/7 ONLINE

Listen online at www.wrdv.org or with Alexa, Siri, & other digital assistants.

**Shop Prime Day deals at
smile.amazon.com to
support us while you shop,
at no cost to you**

amazonsmile

When you #StartWithASmile, Amazon donates 0.5% of the purchase price to Town and Country Players. Bookmark the link <https://smile.amazon.com/townandcountry> and support us every time you shop.

TOWN AND COUNTRY PLAYERS
2023 SEASON



APRIL 21 - MAY 6

MONTY PYTHON'S SPAMALOT

A new musical inspired ripped off from the motion picture MONTY PYTHON and the Holy Grail



ONE ACTS

MAY 19-21

**SPECIAL
EVENT**

JUNE 9-17

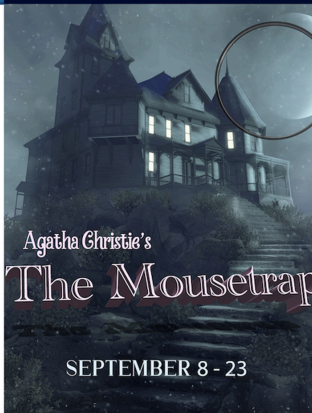


**seussical
THE
MUSICAL**

JULY 14-29

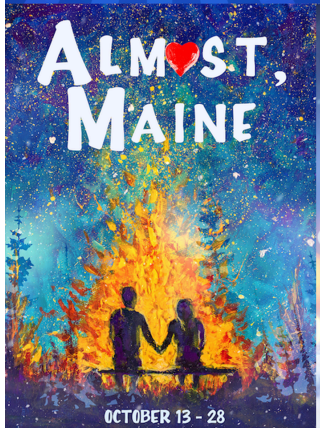
**YOUTH
WORKSHOPS**

JULY 17-31



Agatha Christie's
The Mousetrap

SEPTEMBER 8 - 23



**ALMOST,
MAINE**

OCTOBER 13 - 28



Christmas Show

NOVEMBER 17 - DECEMBER 2

TOWN AND COUNTRY PLAYERS PRESENTS

**HOLIDAY
SHOW**



DECEMBER 15-17
A TOWN AND COUNTRY TRADITION

***Proud Supporter of
the Arts and Community Theater
in Bucks County***



Shelly Law Offices, LLC

Concentrating in Plaintiff Personal Injury and Wrongful Death Law

ph 267-454-7940 • fax 267-454-7941 • www.shelly-law.com
70 W. Oakland Ave., Suite 208 • Doylestown, PA 18901
carol@shelly-law.com • kwhite@shelly-law.com
• sfrankenfeld@shelly-law.com



**We Fight
Because We Care**

Fierce litigators who cut through the confusion.



Proudly Supports

**Town and Country Players Theater's
75th Season
and their endless dedication
to performing and theater arts.**



"Break A Leg, Town and Country Players"

Community Banking at heart.

FDIC www.williampenn.bank 800-845-3577

