

PLAYBILL®

Town and Country Players
Doylestown, PA



Directed by Jessica Briggs
Music Direction by Sue den Outer
Choreography by Marissa Miller
Produced by Alyssa Moore
Assistant Produced by Kierney Corliss

Music and Lyrics by Dolly Parton, Book by Patricia Resnick
Based on the 20th Century Fox Picture
Originally produced on Broadway by Robert Greenblatt, April 2009
Orchestrator Bruce Coughlin, Arrangements and Additional Orchestrations by Stephen
Oremus & Alex Lacamoire
9 to 5, the Musical is presented through special arrangement with
Music Theatre International (MTI)
All authorized performance materials are also supplied by MTL www.mtishows.com

April 12 - April 27

Town and Country Players

PRESENTS

9 TO 5

Music and Lyrics by
Dolly Parton

Orchestrator
Bruce Coughlin

Book by
Patricia Resnick

Arrangements and Additional
Orchestrations
**Stephen Oremud
& Alex Lacamoire**

Based on the 20th Century Fox Picture
Originally produced on Broadway by Robert Greenblatt, April 2009.

with

Cara Cirillo
Sydney Broitman
Matthew Cirillo
Karen Cameron
Ken Amb's
John Dwyer

Susan Fowler
Ben Menahem
Ali DiPaolo
Mason Amb's
Caitrin McLean
Alec Kravitt
Kristin Sheridan

Amelia Ball
Jessa Casner
Thomas Wick
DJ Holcombe
Robert Reiser
Kristin McGee

Directed by
Jessica Briggs

Produced by
Alyssa Moore

Musical Direction by
Sue den Outer

Choreographed by
Marissa Miller

Julia Baker
Percussion
Sam D'Aversa
Reeds

Orchestra
Sue den Outer
Piano

Stephen Burke
Bass
John Sheridan
Guitar

9 TO 5, *THE MUSICAL* is presented through special arrangement with
Music Theatre International (MTI).

All authorized performance materials are also supplied by MTI.
www.mtishows.com

Any video and/or audio recording of this production is strictly prohibited.

SONGS

ACT I

9 to 5	Violet, Doralee, Dwayne, Judy, Ensemble
Around Here	Violet, Ensemble
Here for You	Hart
I Just Might	Judy, Doralee, Violet
Backwoods Barbie	Doralee
Heart to Hart	Roz and Ensemble
Dance of Death	Judy, Hart, Ensemble
Cowgirl's Revenge	Doralee, Hart, Ensemble
Potion Notion	Violet, Hart, Ensemble
Joy to the Girls	Judy, Doralee, Violet, Hart, Ensemble
Shine Like the Sun	Doralee, Judy, Violet

ACT II

Entr'acte	Orchestra
One of the Boys	Violet, Boys
5 to 9	Roz
Change It	Doralee, Violet, Judy, Ensemble
Let Love Grow	Joe, Violet
Get Out and Stay Out	Judy
Finale	Full Company



The image shows a sign for a hearing aid induction loop area. On the left is a blue square with a white silhouette of a human ear and a white 'T' in a white square, representing a telecoil. To the right, the text is arranged as follows:

Audio Loop Installed

**Hearing Aid
Induction Loop
Area**

Use Your Telecoils

Audio Loop Installed

DIRECTOR'S NOTES

Welcome to the office culture of the late 1970s-early 1980s!

This show is at its core, really about the female voice and how much it means to be able to deal with issues women still face today. Dolly was ahead of her time with the concept of *9 to 5*, as we women are constantly told “just smile sweetie”, and “it was only a joke!” when hit with a misogynistic or rude comment from a male co-worker, or really any man in passing.

We swallow our pain, we smile, we demure, because society has taught us that we are expected to excuse this kind of behavior. When in fact, it is the opposite - we deserve respect in all aspects of our lives, at home and in the workplace, and we are slowly but surely moving toward that goal.

The themes of harassment, misogyny and gender discrimination are still woefully present in 2024 as they were in the late 1970s-early 1980s, and *9 to 5* addresses those relevant themes in a straightforward, often hilarious and thought-provoking way, that I truly hope leaves our audience with a sense of hope and triumph when they leave the theater.

I am beyond thankful to everyone at T&C and beyond who has worked tirelessly to help make *9 to 5* such an amazing and beautiful production. This show could not have happened without our stellar cast members, our hardworking crew, and our incredible production team, the T&C board, our loyal T&C members, and countless others who have been with us every step of the way to make *9 to 5* happen. Our tireless cast, crew and production team deserves the credit for taking this show to an entirely different level. I quite literally could not have done any of this without Sue den Outer, Alyssa Moore, Tammy Tuckey, Marissa Miller, Kierney Corliss, Janemarie Cloutier, Jon Knapp, Barb Emch, Anne and Walter Hauck, and Scott Monsees.

If you are a Dolly Parton fan, or even if you have never heard of *9 to 5*, I promise that you will thoroughly enjoy this beautiful show. We all hope that you Shine like the Sun!

CAST MEMBERS

Cast Members (in order of appearance)

Violet Newstead	Susan Fowler
Josh	Mason Ambs
Doralee Rhodes	Cara Cirillo
Dwayne Rhodes	Matthew Cirillo
Judy Bernly	Amelia Ball
Roz Keith	Sydney Broitman
Kathy	Jessa Casner
Franklin Hart, Jr.	Ben Menahem
Missy	Caitrin McLean
Maria	Ali DiPaolo
Joe	Thomas Wick
Margaret	Karen Cameron
Dick	DJ Holcombe
Bob Enright	Robert Reiser
Tinsworthy	Ken Ambs
Detective	John Dwyer
Doctor	Alec Kravitt
Candy Striper	Kristin McGee
New Employee	Kristin Sheridan

PRODUCTION/CREATIVE

Production Team

Director	Jessica Briggs
Producer	Alyssa Moore
Music Director	Sue den Outer
Asst. Producer/Properties	Kierney Corliss
Choreographer	Marissa Miller
Stage Manager	Tammy Tuckey
Light/Sound Design	Scott Monsees
Set Designer/Master Carpenter	Jon Knapp
Costume Designer	Janemarie Cloutier
Production Stage Manager	Walter Hauck
Lighting Tech	Anne Hauck
Hair Design	Lynne Anne Donchez
Makeup Designer	Kallie Cooper Damon
Dance Captain	Caitrin McLean
Stage Crew	Eric Raymond
Music and Lyrics by	Dolly Parton
Book by	Patricia Resnick
Program	Kim O'Byrne, Jean Lausten, Eric Raymond
Spotlight Operators	Lily Corliss, Gary Beck, Colby Langweiler, Kallie Cooper Damon

Acknowledgements

The cast and crew of *9 to 5* would like to thank the following individuals and organizations:

Sarah LeClair for her work to get everything up and running.

Mary Jane Atkinson and the staff of the Buckingham Township Building and Patti Roden from New Britain Baptist Church for the rehearsal spaces.

Reina Faith and the Dance Arts Collaborative for the audition space.

Jenkintown Music Theatre for the use of the copier.

Susan Galli for her props expertise.

The Waldowskis for their love and support to make this show possible.

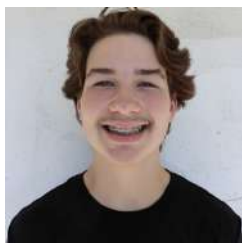
WHO'S WHO



Susan Fowler

as Violet Newstead

Susan has been performing in local & regional theaters in NJ/NY/PA for over 30 years. Credits: Laura in *Meteor Shower*, Claire in *A Delicate Balance*, including *Twelfth Night* (Maria), *August: Osage County* (Barbara) at T&C! Susan's career has always included both straight plays but this part was waiting for her at just the right time, & this old gal is so happy to be One of the Boys!



Mason Amb's

as Josh

Mason is thrilled to be playing Josh in this production. Mason has been in T&C almost since he was born, and has performed & worked backstage. Past shows include: *Shrek: The Musical*, *The Music Man*, and *Mamma Mia!* Mason wants to thank the cast and crew of *9 to 5*, as well the T&C advisors and his amazing family for making this show one of the best ones, he's been a part of.



Cara Cirillo

as Doralee Rhodes

Cara is thrilled to make her T&C debut! A WCU grad with a BA in Theatre, her favorite past roles include Miss Honey *Matilda*, Rachel Green, Blanche & Rose *Without a Cue*. Cara holds a Masters in Elementary Education & is a Pinterest worthy cupcake baker (IG: @Cupcakes.by.Cara). Proud mother to Layla & Madelyne, she sends love to her husband Matt, family & friends for their support!



Amelia Ball

as Judy Bernly

Amelia is thrilled to be part of this hilariously iconic workforce! Favorite credits: Belle in *Disenchanted*, Julia Sullivan in *The Wedding Singer*. By day, Amelia works in publishing. In her spare time, she enjoys knitting and Dungeons & Dragons. Amelia is incredibly grateful to the production team, especially Jess and Sue; and to Susan and Cara for being the most wonderful partners in crime.



Matthew Cirillo

as Dwayne Rhodes

Matthew is excited to return to the stage since portraying Captain Von Trapp in *The Sound of Music* (CB East). Who better to play Doralee's husband than her REAL-LIFE husband!? Matt is a Navy Corpsman veteran, Critical Care Nurse at Jefferson Hospital, and girl dad to Layla and Madelyne. Thanks to everyone for making him feel welcome in this production!

WHO'S WHO



Sydney Broitman

as Roz Keith

Sydney is so excited to be back on the T&C stage this season! She was last seen at T&C falling in love, literally, as Shelly in *Almost, Maine*. She is pumped to get a chance to bring Roz to life! Many thanks to Sue, and to *9 to 5*'s fearless leader Jess, who has always been so supportive and an amazing friend. Many thanks & love to my incredible friends, family, and her fiancé, Pat.



Jessa Casner

as Kathy

Jessa is beyond excited to join this incredible cast and crew and be a part of this super feminist empowering story! Jessa is a Child Care Teacher at Bright Light Early Learning Center. Some favorite past T&C credits include: Gertrude McFuzz, *Seussical* and *Susie Bones, Puffs*. She sends lots of love to Kev, Barney, and Peeb.



Ben Menahem

as Franklin Hart, Jr.

Ben is thrilled to be returning to T&C after performing in *Guys & Dolls* (Sky Masterson). Ben is a NY born, NJ based actor. Regional: *Into the Woods* (Cinderella's Prince/The Wolf); *Beautiful: The Carol King Musical* (The Righteous Brothers); *A Chorus Line* (Al DeLuca). Thanks to Marissa Miller for getting me involved! Thanks to my family & friends! benjaminmenahem.com IG: @bennyboombats



Caitrin McLean

as Missy

Caitrin is thrilled to be a part of *9 to 5*! This is her first appearance at T&C. She has most recently been seen in *Cinderella*, *The Wedding Singer*, and as Tintinabula in *A Funny Thing Happened on the Way to the Forum*, all at Newtown Arts Company. Shout-out to husband Matt and daughters Evie and Bonnie!



Ali DiPaolo

as Maria

Ali is excited to make her T&C debut after a 13-year hiatus from performing. Favorite past roles include Petra in *A Little Night Music*, Peggy in *42nd Street* and Bloody Mary in *South Pacific*. Thanks to my husband, Jason, for taking over bedtime and all my love to Lux and Porter; Mommy is, by far, my favorite role.

WHO'S WHO



Thomas Wick

as Joe

Thomas is proud to be in his first show at T&C. Stage credits: Fenton in *The Merry Wives of Windsor*, Jean-Michel in *Cinderella*, Ash in *Evil Dead: The Musical*. Film credits: *A Man Called Otto*, starring Tom Hanks & *Somewhere in Queens*, from Ray Romano. Thomas thanks his family, Jessica for being an outstanding director, Sue's masterful musical compass & this talented cast.



Karen Cameron

as Margaret

Karen is thrilled to be on the T&C stage with the incredibly talented cast, crew, and production team. Recent stage work: *The Holiday Show Cavalcade*; *Elf the Musical*; and *Variations on the Death of Trotsky* (Mrs. Trotsky). Many thanks to my family, my son, Forrest, and Ryan for always supporting me. Thank you for coming and enjoy the show!



DJ Holcombe

as Dick

DJ has been on stage forever, the audiences feel, at Newtown Arts Company, Actorsnet in Morrisville, New Hope Repertory Theater and a year ago on this very stage. He's played Fagan, Friar Lawrence, Victor Frankenstein, and many others. This time he wanted something easy, so he's playing a corpse. Oh, and he's in the men's chorus. And he's a Dick. I mean he IS Dick . . . that's his part.



Robert Reiser

as Bob Enright

Robert is thrilled to be back performing at T&C! He was last seen as Pete in *Almost, Maine* last season. He has been involved with other community theatre groups in the area. Favorite past roles include Joey in *Sister Act*, Schroeder in *Charlie Brown*, and Chuck Cranston in *Footloose*. He is on the board of Newtown Arts Company. Thank you for coming and enjoy the show!



Ken Ambs

as Tinsworthy

Ken is thrilled to join his son, Mason, in this production. He was last seen at T&C in *The Sound of Music*, *Guys and Dolls*, *Willy Wonka* (Mr. Bucket) and *The Nutcracker* (Drosselmeyer). Previous performances include *City of Angels* (Stone) & *Sweeney Todd* (Fogg); *Shrek* (Shrek), *Tom Sawyer* (Judge Thatcher), *Mamma Mia!* (Sam), *1776* (Franklin), *42nd Street* (Marsh).

WHO'S WHO



John Dwyer

as Detective

John was last seen as Norman Thayer in *On Golden Pond* at Kelsey Theater. He has a BFA in theater-acting from the University of Detroit and has appeared at MMT as Selden in *Noises Off*, Underling in *The Drowsy Chaperone* and at Bucks County Playhouse as The Wizard in *Once Upon a Mattress*. He is a certified personal trainer, who loves to help clients lose weight and reach their health goals.



Alec Kravitt

as Doctor

Alec is honored to return to T&C in this production of *9 to 5*! He was last seen in *Clue* (The Motorist) and *A Christmas Carol* (ensemble). Other shows include *The Little Prince* & The Holiday Channel Christmas Movie *Wonderthon* as six characters! Alec would like to thank his family & friends for the support. To quote a beloved country singer, "Old Flames Can't Hold a Candle to You"!



Kristin McGee

as Candy Striper

Kristin is thrilled to be joining the talented cast of *9 to 5* for her first show at Town and Country Players, and she hopes to be taking part in many more! Kristin was last seen as Hannah Hubert in *The Best Christmas Pageant Ever*. She wants to thank her friends and family for all of their support as she gets back on the stage!



Kristin Sheridan

as New Employee

Kristin is a childcare teacher who sings and dances daily to entertain toddlers. She is excited to be a part of *9 to 5*, working with another talented group of people at T&C. Credits include *Spamalot* & *The Holiday Cavalcade*. Kristin thanks her family and friends who continue supporting this new adventure, as well as the *9 to 5* Production Team, cast and crew for an enjoyable show!

WHO'S WHO

Jessica Briggs

Director

Jessica is thrilled to have had the opportunity to direct *9 to 5* having directed her last T&C show, *The Probably Doomed Cabaret* in 2023. She would like to thank her incredibly talented cast, her wonderful production team and amazing crew for making this show so incredible, and making this entire process so much fun! As always, love to the most supportive husband EVER, Lee.

Alyssa Moore

Producer

Alyssa is delighted to be a part of the first show of the season. She's spent most of her time at T&C on the stage but is so happy to be on this side with this amazing team, led by incredible women. All the love to Matthew, Jacob, Nicholas and Lucas. "If you see someone without a smile today, give 'em yours." - Dolly Parton.

Sue den Outer

Music Director

Sue is a graduate of Cornell University and an actuary with WTW. Favorite music director credits: *Ain't Misbehavin'* (MMT, 2023), *Head Over Heels* (MMT, 2021), *A Gentleman's Guide to Love and Murder* (MMT, 2019 and 2022). Favorite on stage credits: pianist in *33 Variations* (Kelsey, 2021) and Olga in *Stage Door* (NAC, 2016). Sue is thrilled to work with this amazing production team & cast.

Kierney Corliss

Asst. Producer/Properties

Kierney is thrilled to be supporting the talented cast and crew of *9 to 5* in her first production with T&C. Previous theater experience includes pretending to play trumpet in her high school's pit orchestra. She sends her love to her family (the Ls, the Js, and little K).

Marissa Miller

Choreographer

Marissa is excited to come back to T&C with *9 to 5*! She's been training in the arts since the age of four, starting at Bucks County Playhouse. She has EMC credit from Act Two Playhouse & BA in Business Management from Delaware Valley University. She dreams of one day running a theatre. Marissa would like to thank Jessica and Sue, and thanks her mom for her support. Break legs, everyone!

WHO'S WHO

Tammy Tuckey

Stage Manager

Tammy is excited to be a first-time stage manager! She thanks Alyssa & Jess for all their support. She was last seen at T&C as Miss Casewell in *The Mousetrap* & Not Dead Fred in *Spamalot*. Aside from performing, she hosts The Tammy Tuckey Show ([youtube.com/TammyTuckey](https://www.youtube.com/TammyTuckey)) & has albums/song covers at www.tammytuckey.com! Love to mom & dad!

Scott Monsees

Light/Sound Design

Scott is excited to be back in the theater for 2024. Scott is an award-winning lighting and sound Designer. Scott was last seen as the Lighting and Sound Designer for *The Sound of Music*, *Young Frankenstein*, *The Hunchback of Notre Dame*, *Oklahoma!*, & *The Music Man*. He would like to thank his friends & family for all their help & support. Congratulations to the cast and crew.

Janemarie Cloutier

Costume Designer

Janemarie recently directed *A Christmas Carol* for T&C and looks forward to directing *A Midsummer Night's Dream* this season. Thanks to Jess for the opportunity to work with this talented company. She would like to dedicate her work on *9 to 5* to the memory of her mother, Jane Kelly, a secretary who could have been CEO. Rob & Jack: I will always love you.

Walter Hauck

Production Stage Manager

Walter began working the technical side of theater at Paramus (NJ) High School. After college, he worked with Winnetka Community Theater, Appletree Theater Company, and as lighting tech, lighting designer, stage manager, and Board member with Peninsula Musical Theater (Belmont, CA). Walter has been with T&C since 1994 as lighting tech, VP Tech Ops, stage manager, & lighting designer.

Anne Hauck

Lighting Tech

Anne is in her 40th+ year in community theater and 26th year with Town and Country Players. She has stage managed, produced, directed, and designed sets, lights, and costumes. Thank you, Walter, for your loving support! You know me well! It's a lot of fun having a partner in community theater!

Lynne Anne Donchez

Hair Design

Lynne Anne is happy to be back for T&C's 2024 season - cheers to 77 years! Her last T&C production was *The Mousetrap* as the Hair/Makeup/Costume designer. It's a pleasure to work with the cast & crew of *9 to 5!* Aside from her work at T&C, she is a new author of the book "For the Love of Hats," now on Amazon: <https://a.co/d/gq2aBzm>

Kallie Cooper Damon

Makeup Designer

Kallie is thrilled to join the talented cast and crew of *9 to 5!* All my love to Lee, Ryker, and Claire Damon. "I started sleeping with my makeup on, partly because of the earthquakes. I thought, 'I'm not heading out on the streets without makeup in case there are cameras out there! I'm going to be ready to go!'" - Dolly Parton

Eric Raymond

Stage Crew

Eric is thrilled to be back doing his third production at T&C. His most recent credits were *Guys and Dolls*, *Elf the Musical* and *Twelve Angry Jurors*. He also serves on the T&C marketing committee. Enjoy the show! "Get up and work! Get up and work!"

Dolly Parton

Music and Lyrics by

Dolly Parton is considered to be the most successful female country music artist, having released 42 top-10 country albums and earned 25 number-one singles. She has won seven Grammy® awards and received 42 Grammy® nominations. She has also received seven awards from the Academy of Country Music and 10 Country Music Association awards, and is one of only five female artists to win the CMA's highest honor, "Entertainer of the Year." Dolly is also an acclaimed movie and television actress, and her literacy program, Dolly Parton's "Imagination Library," is now in 566 counties in 36 states. "*The woman is one of our national treasures, so let's cherish her for as long as we've got her...this is one Barbie who has always been for real,*" wrote *Newsweek* in 2008. <http://www.dollyparton.com/>

Patricia Resnick

Book by

Patricia Resnick has enjoyed a successful and varied career in film, television, and theatre. She wrote the original screenplay for the film *9 to 5*, one of the top-grossing films of all time. Under the tutelage of Robert Altman, she co-authored *A Wedding* and *Quintet* (Paul Newman). Other films include *Maxie* and *Straight Talk*, which reunited her with Dolly Parton. She has written numerous pilots for television and seven made for television movies include *The Battle of Mary Kay* starring Shirley MacLaine and Parker Posey (both Golden Globe nominated). She was the exec producer/head writer of a series based on the book *Olivia* for Nick Jr. Her theatre work includes her Drama Desk nominated book for the musical *9 to 5* (4 Tony nominations), sketches for Lily Tomlin's one-woman Broadway show *Appearing Nightly*, and a stage musical adaptation of her own movie *Ladies in Waiting*.

Music Theatre International .

Music Theatre International (MTI) is one of the world's leading theatrical licensing agencies, granting theatres from around the world the rights to perform the greatest selection of musicals from Broadway and beyond. Founded in 1952 by composer Frank Loesser and orchestrator Don Walker, MTI is a driving force in advancing musical theatre as a vibrant and engaging art form. MTI works directly with the composers, lyricists and book writers of these musicals to provide official scripts, musical materials and dynamic theatrical resources to over 100,000 professional, community and school theatres in the US and in over 150 countries worldwide. MTI maintains its global headquarters in New York City with additional offices in London (MTI Europe) and Melbourne (MTI Australasia).

Meet T&C's 2024 Board Members

Jon Knapp

President

Valerie Sharper

Executive Vice President

Jen Ahr

Secretary

Jason Herbert

Vice President of Productions

David Sharper

Treasurer

Jim McIntosh

Vice President of Membership

Julie Massa & Caitlin Davies

Vice President of Marketing & Publicity

Jackie Parzanese

Vice President of Youth Outreach

Matthew Schultheis

Past President

T&C WANTS YOU TO KNOW.....

Welcome to Town and Country Players' 2024 Season. This is our 77th season of bringing quality community theater to the Bucks County area.

This is a particularly special season for us as it is the first in our history in which all our directors and producers are women. The theatre cannot and would not have survived without the work, passion, and skill of the women in our history and we cannot thank them enough for their contributions. Throughout the year we will be highlighting some of these extraordinary women on our website (townandcountryplayers.org), so stop by periodically to catch-up

As a non-profit, community theater, we have the luxury and challenge of owning and maintaining our 250+ year old barn. This year marks the 10th anniversary of the 2014 addition that included bathrooms, rehearsal room and costume storage loft. Last year we installed permeable pavers to stabilize the handicapped and front parking area to improve the patron parking experience. Over the winter we completed a refresh of our lobby to meet the needs of both patrons and productions more efficiently. Our next significant capital improvement will be the installation of an ADA compliant ramp to allow for easier access to our facility for all.

We continue the ongoing work of ensuring that we remain fiscally strong for many years to come. To ensure we can keep the lights on, and focused on our tremendous productions we look to our community; members, patrons, and civic institutions to join us in this effort. We have applied for some local grants to kickstart our ramp fundraising efforts and I encourage each of you to consider what T&C means to you and if possible, make a gift. More information can be found on our website.

Finally, T&C is not just a theater to many of us. It is a second home and a safe haven. It's a place where we have made lifelong friends and had the opportunity to push ourselves to shine in ways we never thought were possible. Our board is committed to be a welcoming and inclusive institution for the entire community and hope that you'll join us again and again (and tell your friends)!

Enjoy the show!

Jon Knapp

President, Town and Country Players

<https://townandcountryplayers.org>

<https://www.facebook.com/townandcountryplayers>

T&C WANTS YOU TO KNOW.....

Become a Friend of Town and Country Players

This year Town and Country Players is celebrating its 77th Season. Our theatre is run by volunteers and we rely on your generous, tax-deductible financial support to help defray the cost of our lovely facility.

Please add your name to our "*Circle of Friends*" so that we can continue to provide you with high quality productions and theatre workshops for many years to come.

Your donation will be acknowledged on our "*Circle of Friends*" page next season.

We are deeply grateful for your generous support.

Please enclose the form below with your check or money order and mail to:

Town and Country Players
PO Box 323
Doylestown, PA 18901

Contributions can also be made through PayPal on our website at:

www.townandcountryplayers.org

<i>Producer's Circle</i>	\$1,000 and up
<i>Director's Chair</i>	\$500 - \$999
<i>Leading Role</i>	\$100 - \$499
<i>Supporting Cast</i>	Up to \$99

Name: _____

Street: _____

City: _____ State: _____ Zip: _____

Phone: _____

Email: _____

Town and Country Players is a 501(c)(3) Not-for-Profit organization
Your gift is tax deductible

Get Involved!



T&C Raffle

Our raffle helps to support the building fund. We offer custom raffle options for each show. Raffle tickets are \$5.00 each or five tickets for \$20.00. Each raffle ticket is also eligible for our end of year prizes!

Volunteer to Earn a Free Ticket

Members and Non-Members may volunteer to usher, direct parking, or sell raffle tickets for our shows and will receive a FREE SEAT for the performance for which they are volunteering! If you are interested in volunteering, you may sign up on our website!

Become a T&C Member

We would love to have you as a member of our T&C family! Members have the right to participate in all meetings, parties, and events. They also have the right to vote for the slate of plays for future seasons, and vote for our board members, along with other membership benefits!. Please see the membership page of our website for how to apply!

Single Membership: \$30

Couples Membership: \$50

Junior Membership (Grades 7-12): \$20

Family Membership (up to 2 adults and 4 juniors): \$75

www.TownAndCountryPlayers.org

T&C WANTS YOU TO KNOW.....

NEXT MONTH ON THE T&C STAGE!

She Kills



M nsters

Directed by Julie Lynn Massa

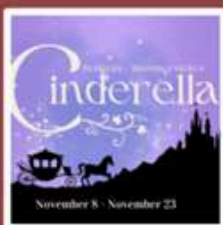
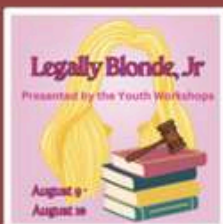
Produced by Jenny McNiven

Written by Qui Nguyen

"She Kills Monsters" is presented by arrangement with
Concord Theatricals on behalf of Samuel French, Inc.
www.concordtheatricals.com

May 31 - June 15

T&C's 77th Season



Check out our website for how to purchase tickets and for more information on all of our offerings this season!

www.TownAndCountryPlayers.org



Family-owned independent bookstores

Two great locations!



The Doylestown Bookshop
16 S. Main Street Doylestown, PA



The Lahaska Bookshop
162 A Peddler's Village Lahaska, PA

- *Monthly events & book clubs, the newest books, curated selection of gifts, cards & puzzles, knowledgeable booksellers, hometown service*

Shop Online



www.doylestownbookshop.com



**Plumbing • Emergency Repairs • Water Heaters
Water Treatment • Bathroom Remodeling**

We Do Well Pumps! • 215.348.3113 • KniesesPlumbing.com

3633 Old Easton Road, Doylestown, PA 18902

PA Lic# 004105



WRDV-FM

97.1 Bensalem, PA
105.7 Lansdale, PA
107.3 Philadelphia, PA
89.3 Warminster-Hatboro, PA

WLBS-FM

91.7 Bristol-Levittown, PA

WTHA-FM

88.1 Berlin, NJ

WRDV.ORG

Live, local, and streaming 24/7!



We have all your electrical needs covered

- ❖ Electric Vehicle Chargers
- ❖ Panel Replacements and Service Upgrades
- ❖ Lighting for Inside and Outside
- ❖ Ceiling Fans
- ❖ Whole House Surge Protector

Residential & Commercial Electrical Services Provided

• Free Estimates • Upfront Pricing • Fully Licensed & Insured • Senior Citizen & Military Discount

1214 Easton Road • Suite L2 • Warrington • PA • 18976 •

215-343-4030

www.KircherElectric.com



ROBERT O'REILLY

Thank you TOWN & COUNTRY PLAYERS for your sincere dedication to supporting, and enhancing the Theater & Arts in our community!

***listen for my radio Ad on WRDV 89.3 FM**



Trusted, and accountable financial advisory services for your Investments, Retirement Income Planning, College Planning, Creating family budgets, and Insurance needs.

'As a Fiduciary, I am dedicated to professionally supporting, educating, and providing informed direction to each client'

-Robert O'Reilly

165 West Ashland St. • Doylestown, PA 18901

(267) 815-5669

Email: robert.oreilly@lpl.com

www.DWMWealth.com

Contact me for a free consult by email or phone.

Securities offered through LPL Financial, Member FINRA/SIPC. Investments advise offered through Great Valley Advisor Group, A Registered Investment Advisor. Robert M. O'Reilly and Great Valley Advisor Group are separate entities from LPL Financial.



BUCKS MONT PARTY RENTAL

Bucks-Mont Party Rentals is a full service party rental company with over 35 years of experience in Bucks County. We specialize and customize our tents to you and your needs. Our extensive inventory includes tents, tables, chairs, dishware, lighting, linens and much more. We have what it takes to make your special event dreams come true!

visit us:

**238 WEST BUTLER AVE
NEW BRITAIN, PA 18901**

bucksmontparty.com

or call us

215-345-4556

[@bucksmontpartyrental](https://www.facebook.com/bucksmontpartyrental)
 [@bucksmontparty](https://www.instagram.com/bucksmontparty)

YOU CAN DO IT!

SEE YOUR AD HERE!

**AND IN OUR PLAYBILL!
REACH THOUSANDS & SUPPORT THE ARTS TOO!**

EMAIL US AT:

TandCMarketing1@gmail.com



***Proud Supporter of
the Arts and Community Theater in
Bucks County
Carol Shelly, Esquire***



Shelly Law Offices, LLC

Concentrating in Plaintiff Personal Injury and Wrongful Death Law



ph 267-454-7940 • fax 267-454-7941 • www.shelly-law.com

70 W. Oakland Ave., Suite 208 • Doylestown, PA 18901

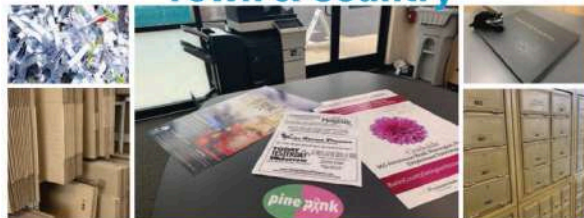
carol@shelly-law.com • kwhite@shelly-law.com

• sfrankenfeld@shelly-law.com • jsegal@shelly-law.com





To the Cast and Crew of
Town & Country



- Packing & Shipping
- Small Business Services
- Office & Mailing Services
- Veteran/Armed Service Discounts
- Professional Printing
- Mail & Postal Services
- Notary Services
- Faxing Services

WARMINSTER: 868 WEST STREET ROAD
215-672-5330 • store4907@theupsstore.com

DOYLESTOWN: 132-A VETERANS LANE
215-230-9898 • store3797@theupsstore.com

WARRINGTON: 1601 MAIN STREET
215-343-3111 • store7610@theupsstore.com

PROUD PRINTER OF THE SHOW PROGRAM!

Jessica Briggs
PHOTOGRAPHY

FINE ART PORTRAITURE
HEADSHOTS
PERSONAL BRANDING

WWW.JESSICSBRIGGSPHOTOGRAPHY.COM
IG: @JESSICSBRIGGSPHOTOGRAPHY



Chris Nisbet, Associate Broker
 chris@chrisnisbet.com
 Office: 215.348.3558 x117
 Cell: 215.416.9249

*Proudly Selling Homes
 in Bucks and Montgomery Counties for over 25 years*

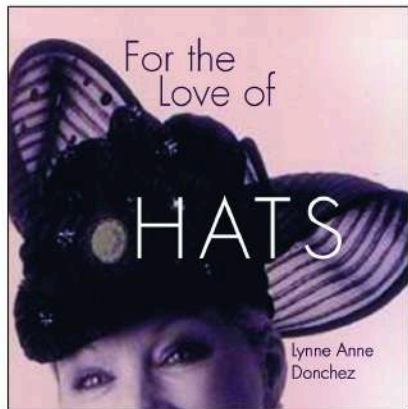


JCarroll Molloy

REALTOR, LLC
 ESTABLISHED • 1916

30 South Main Street
 Doylestown, PA 18901
www.jcmolloy.com

*For the
 Love of Hats*



Lynne Anne Donchez, Author

Book description: For the Love of Hats showcases dozens of chic and unique hats from the collection of Lynne Anne Donchez, professional hair stylist, salon owner, teacher and hat connoisseur of Bucks County, PA. Her hat collection spans clothes, pillboxes and fascinators to pork pies, Mr. John hats and men's toppers. The book also intertwines some of Lynne Anne's fond memories about individual hats and stories of their origins.

NOW AVAILABLE ON

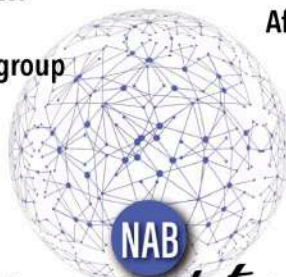
amazon

-OR-

ORDER DIRECT FROM THE AUTHOR:
LYNNEANNE.DONCHEZ@YAHOO.COM
 OR CALL (267) 885-4949

For more information:

facebook.com/NABleads
buckscountynetworking.group
267-272-5964



Community Oriented
Affordable Membership Fee
Friendly Atmosphere
No Financial Penalties
All Visitors Are Welcome!

networking *associates* of bucks
nab a lead!

Tuesdays 12-1pm Lunch with Casual Nnetworking at 11:45am
Water Wheel Tavern, 4424 Old Easton Road , Doylestown, PA 18902

Networking with local business owners and associates
from Bucks & Montgomery Counties.

Our core members have been exchanging referrals
and supporting each other's businesses for over 10 years.

Town and Country Players
Presents...

Summer
THEATER
WORKSHOPS
2024



only
\$350
/week

Week 1
July 15-19
9:00 am - 3:30 pm
Grades 3-6

Week 2
July 22-26
9:00 am - 4:00 pm
Grades 7-10

Register today!

TOWNANDCOUNTRYPLAYERS.ORG

TOWN AND COUNTRY PLAYERS is a
501(C)(3) Not-For-Profit Organization



GLASS MASTERS

Window Cleaning & Pressure Washing

- Exterior Window Washing
- Interior Window Washing
- Window Sill/Ledge Cleaning
- Screen Cleaning
- Skylight Cleaning
- Pressure Washing
- Soft Washing
- Gutter Cleaning
- Post Construction Glass Cleaning



215-986-6744

More Information :

www.glassmasterswc.com

I think you have to work at
being happy, just like you
have to work at being
miserable. I'm going to grasp
every happy moment I can
find.

- Dolly Parton



***Shelly Law Offices proudly
supports local theatre
and the arts.***



Shelly Law Offices, LLC

Concentrating in Plaintiff Personal Injury and Wrongful Death Law

ph 267-454-7940 • fax 267-454-7941

www.shelly-law.com

70 W. Oakland Ave., Suite 208 • Doylestown, PA 18901

carol@shelly-law.com • kswhite@shelly-law.com

jsegal@shelly-law.com • sfrankenfield@shelly-law.com

